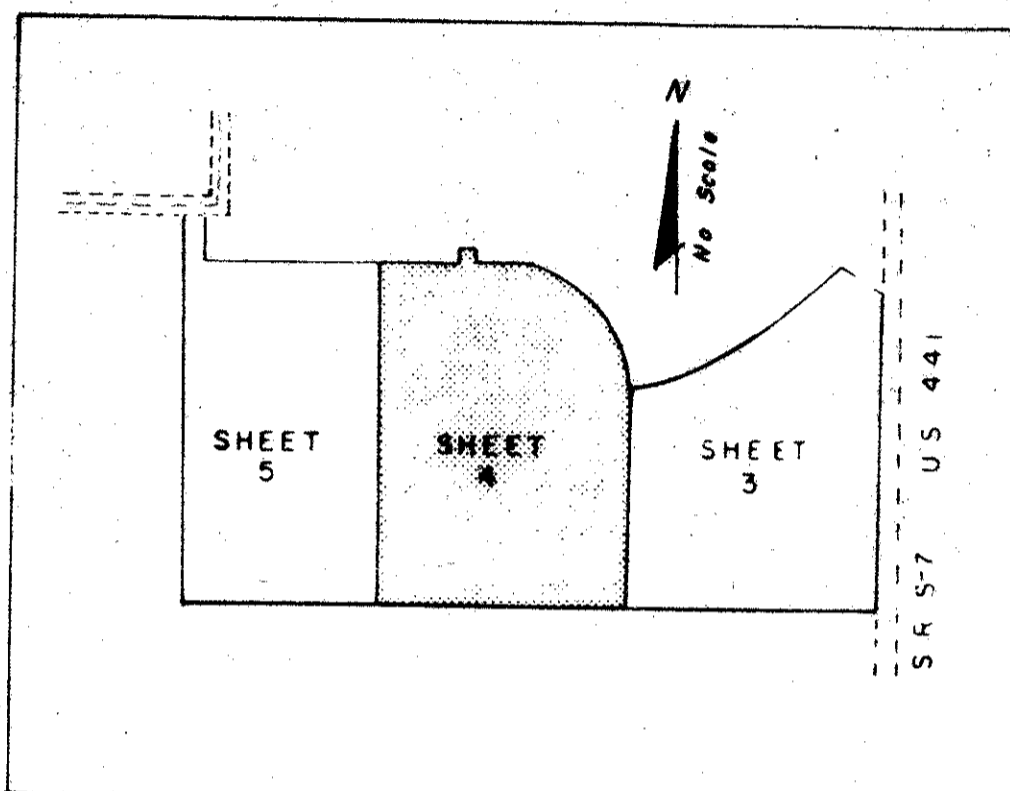


COUNTERPOINT ESTATES PLAT No. 1

IN SECTION 25, TOWNSHIP 43 SOUTH, RANGE 41 EAST, PALM BEACH COUNTY, FLORIDA

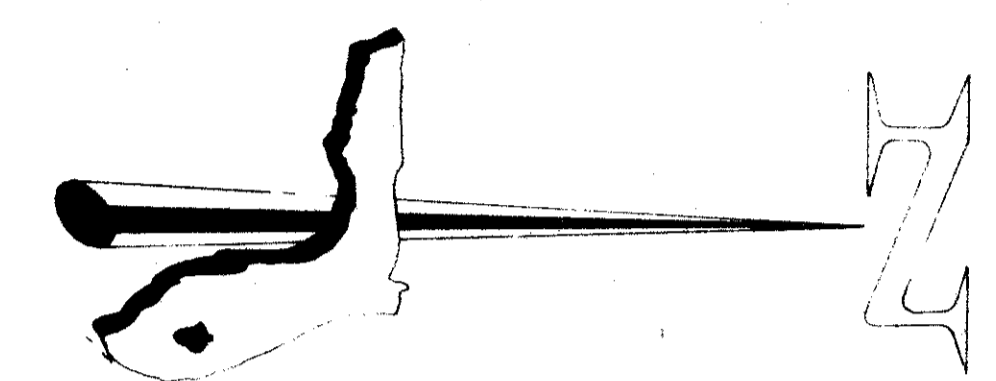
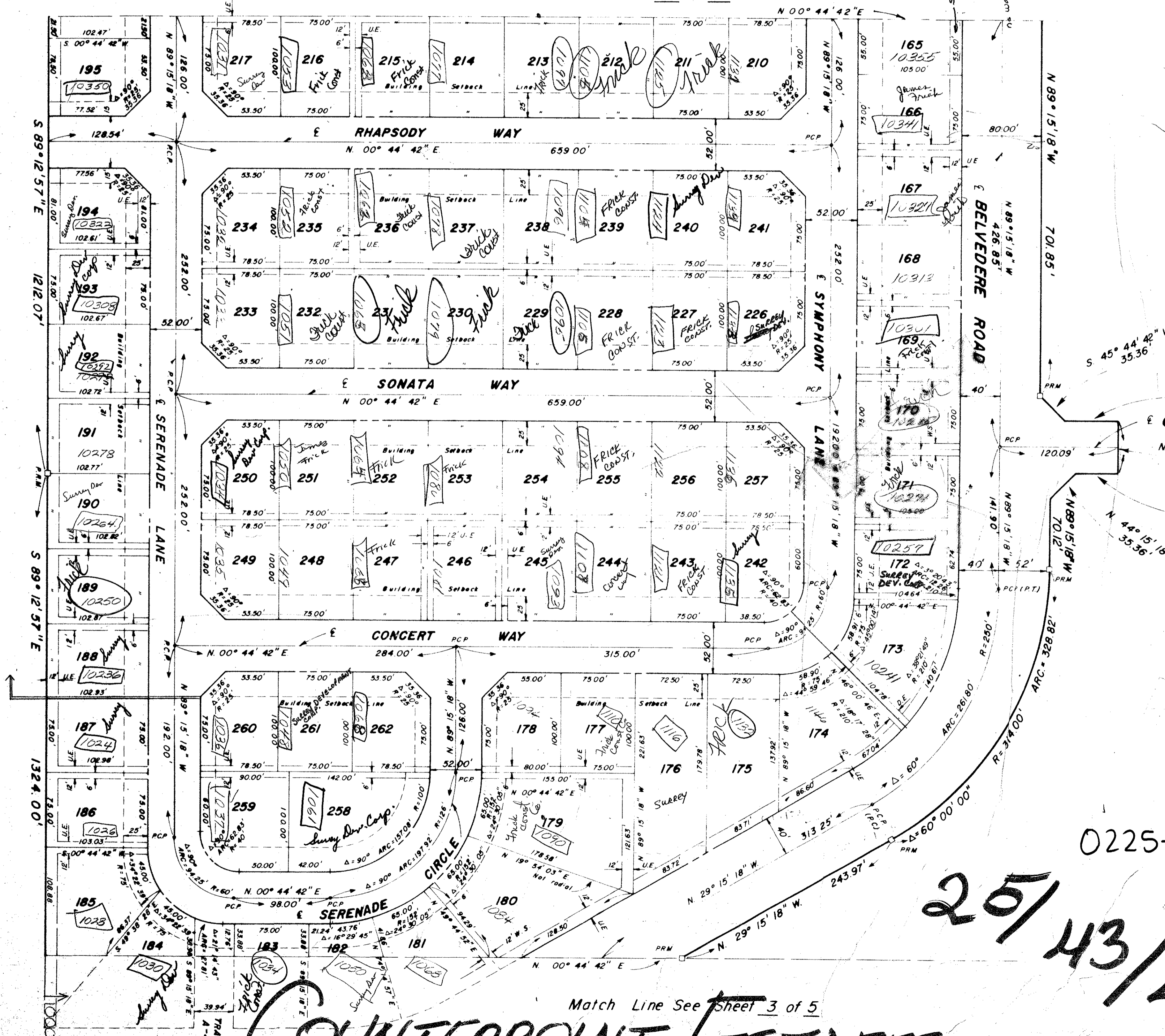
MARCH 1977

Match Line - See Sheet 5 of 5



KEY MAP
Not to Scale

PALM BEACH FARMS PLAT NO. 3
P.B. 2 PAGE 45-64



GRAPHIC SCALE

BEARING DATUM
ALL BEARINGS SHOWN HEREON ARE RELATED TO AN ASSUMED BEARING OF N 89° 12' 30" W ALONG THE SOUTH LINE OF THE SE 1/4 OF SECTION 25, TOWNSHIP 43 SOUTH, RANGE 41 EAST

- NOTES
1. NO BUILDING OR ANY KIND OF CONSTRUCTION OR TREES SHALL BE PLACED WITHIN EASEMENTS.
 2. DRAINAGE EASEMENT TAKES PRECEDENCE OVER UTILITY EASEMENTS.
 3. MAINTENANCE ACCESS RIGHTS ARE GRANTED OVER ALL TRACTS SHOWN HEREON FOR THE PURPOSE OF MAINTENANCE OF UTILITIES.

- LEGEND
- U.E. INDICATES POWER AND/OR TELEPHONE EASEMENT
 - D.E. INDICATES 12' DRAINAGE EASEMENT
 - W.S. INDICATES 12" WATER AND/OR SANITARY SEWER EASEMENT
 - P.C.P. INDICATES PERMANENT CONTROL POINT
 - P.R.M. INDICATES PERMANENT REFERENCE MONUMENT

0225-000

25/43/41

COUNTERPOINT ESTATES

REVISION	DATE	32/159
R.A. GONZALEZ AND COMPANY, INC. CONSULTING ENGINEERS		
FLORIDA SURVEYING & MAPPING, INC. REGISTERED LAND SURVEYORS		
NORTH PALM BEACH FLORIDA WEST PALM BEACH		
COUNTERPOINT ESTATES PLAT NO. 1		
DESIGNED BY	APPROVED	SCALE
DRAWN BY J.M.	10/5/76	1" = 60'
CHECKED BY G.C.P.	17551-3	17551-4